

# WILLATOOK

## Wind Farm



### AT A GLANCE

#### Turbines

Up to 75

#### Turbine height

Up to 250 metres

#### Rates payable

Estimated at \$500,000 per year, for 25 years

#### Local Government Area

Moyne Shire

#### Landholders

21

#### Installed capacity

Up to 450 megawatts (MW)

#### Power generation

About 1500 gigawatt hours (GWh) per year

#### Homes powered

About 300,000

#### Battery storage

Yes

#### Emission savings

About 2 million tonnes of CO<sub>2</sub> per year

#### Project status

Preparing Environment Effects Statement

#### Construction

About two years

#### Project lifespan

25 years plus

### PROJECT UPDATE

**Wind Prospect is close to finalising the proposed layout for the Willatook Wind Farm and expects to share the new design at community drop-in days once COVID restrictions allow.**

It is expected that the revised layout will have 11 fewer wind turbines than the previous design, down from 86 to 75. The maximum tip height of 250 metres remains the same, but the project now allows for 6 MW turbines rather than the 4.8 MW turbines previously proposed.

The project will adopt the latest wind turbine technology, which will maximise energy production and limit noise, and the revised layout will incorporate a new location for the proposed onsite substation and battery energy storage system, avoiding the need for a 5-kilometre overhead transmission line. The revised layout incorporates a proposed on-site quarry, which you can read about on page 2 of this newsletter.

The new layout has been developed over the past eight months and throughout this time 15 technical studies have been conducted to assess potential impacts to:

- local amenity (including noise, shadow flicker and visual);
- Aboriginal and historical cultural heritage;
- the environment (ecology, surface water, groundwater, air quality and geoheritage); and;
- social and economic aspects (including electromagnetic interference, aviation, traffic, land use, social and economic effects).

The new layout also incorporates newly developed turbine-free buffer zones around potential Brolga breeding wetlands. These have been developed from field surveys of the site and surrounding areas, consultation with landowners, observations of Brolga movements around Victorian breeding sites from studies over the last 15 years, observations of the movements of Brolga breeding at the Macarthur Wind Farm since

2012, and the recent Brolga research undertaken by Dr Inka Veltheim.

Ecological specialists Nature Advisory are currently updating the Brolga assessment based on feedback from DELWP and other TRG members.

Since our last newsletter we have also been focusing on progressing technical studies through the Technical Reference Group (TRG), which incorporates representatives from government agencies and regional authorities that have a statutory or policy interest in the project, as well as Moyne Shire Council. We have been busy drafting EES chapters. Immediately before each TRG meeting (held monthly since March) three or four technical studies and EES chapters have been submitted to the TRG for their review. Depending on the nature of feedback, technical studies may be reviewed by the TRG multiple times. The other focus of the team has been preparing the main EES document. We have structured the EES so that each technical area has a dedicated chapter (26 in total).

While COVID lockdowns have made community consultation difficult, we are still planning to hold drop-in days in Orford and Willatook if permitted, and with Covid-safe protocols in place. We are planning for our noise, visual and ecological consultants to attend these sessions to be available for questions. We are also considering other options for community engagement.

From here, the EES will be finalised considering any further feedback and input from the community. The EES will then be submitted for public exhibition, which will involve the EES being exhibited online and at several locations within the region.

We are aiming to have the EES on public exhibition by the end of the year or early next year.

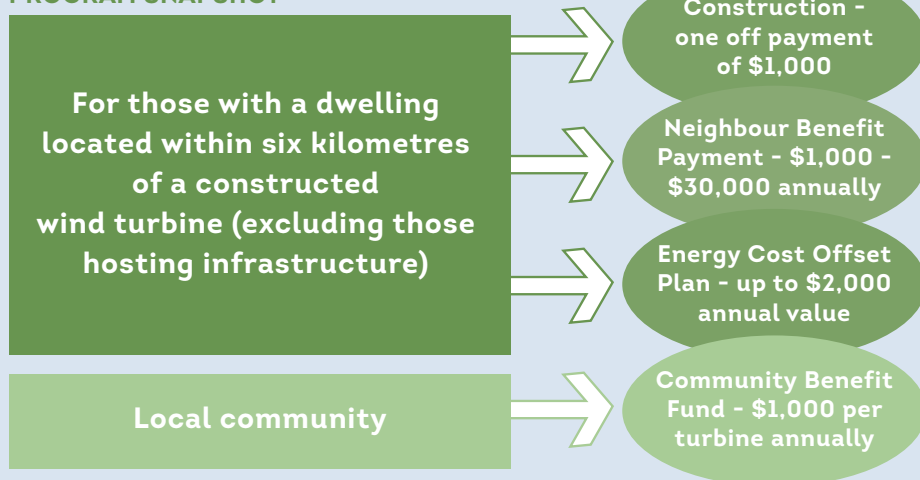
**Warm regards,  
The team at Wind Prospect**

## BENEFIT SHARING PROGRAM

Thank you to everyone who has provided feedback on our Benefit Sharing Program proposal.

We are looking forward to holding community drop-in days once COVID restrictions allow, where we will be able to provide you with the details of turbine distances from your dwelling, and the annual payment the owner of the dwelling would receive under the Neighbour Benefit Program, if the revised layout receives planning approval.

### PROGRAM SNAPSHOT



## PROPOSED ON-SITE QUARRY

An on-site quarry is being proposed to supply crushed rock during the construction of the wind farm, which will reduce heavy vehicle movements on local roads.

The quarry would be located to the east of Old Dunmore Road and about 4 kilometres north/north-east of Orford.

The quarry would use traditional drill and blast practices, and onsite processing using a mobile crusher. Materials would be stockpiled and loaded into delivery trucks for haulage to construction work sites. Blasting would be expected to occur about twice a month for up to 2 years.

Once wind farm construction is complete, the quarry excavation area would be allowed to fill to create a water dam, with a stock fence protecting livestock from entering. The land surrounding the excavation area would be rehabilitated, consistent with the surrounding landscape and usable by the landowner for their farming operations.

**Further information about the quarry and the technical studies carried out to investigate potential impacts will be available at upcoming community information sessions.**

## COMMUNITY FUNDING

**Our sponsorship fund is open year-round and has \$20,000 of funding available per year. Application forms can be found at [www.willatookwindfarm.com.au](http://www.willatookwindfarm.com.au)**

### Friends of St Brigid's \$7,495

The Friends of St Brigid's is a community organisation that acts as the caretaker of St Brigid's Church in Crossley. The group manages the precinct and coordinates a variety of grassroots community groups and events, including community music, 15 Minutes of Fame, Christmas Carols and Irish Dancing.

The group requested \$7,495 to purchase a second-hand piano and trolley for use by budding and experienced musicians.

### Hawkesdale Macarthur Football Netball Club \$5,000

The Hawkesdale Macarthur Football Netball Club is sourcing funding for a second netball court at the Macarthur Recreation Reserve. Willatook Wind Farm has provided \$5,000 for the drawing of plans, shire permits and planning consultant fees to prepare for the project.



## CONTACT US

Wind Prospect Pty Ltd  
PO Box 110 Fitzroy VIC 3065

**Ph:** 1800 934 313

**E:** [info@willatookwindfarm.com.au](mailto:info@willatookwindfarm.com.au)

[www.willatookwindfarm.com.au](http://www.willatookwindfarm.com.au)